

CFPS-9

ISSUE 2; 4 NOVEMBER 2004

Delivery Options

- Please contact our sales office for current leadtimes

Output Compatibility

- Tri-state HCMOS (3.3V)
- Drive Capability 15pF max

Package Outline

- 5.0 × 3.2 × 0.95mm SMD Ceramic Package

Standard Frequency Stabilities

- ±25ppm, ±50ppm, ±100ppm (inclusive of supply voltage & output load variations over the operating temperature range)

Operating Temperature Ranges

- -10 to 70°C
- -40 to 85°C

Storage Temperature Range

- -40 to 85°C

Tri-state Operation

- Logic '1' to pad 1 enables oscillator output ($\geq 70\% V_s$)
- Logic '0' to pad 1 disables oscillator output; when the oscillator output goes to the high impedance state ($\leq 30\% V_s$)
- No connection to pad 1 enables oscillator output

Solder Conditions

- For typical soldering conditions, please see the relevant pages in Applications Notes

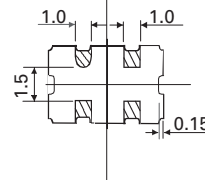
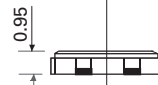
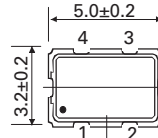
Marking

- Model number
- Frequency

Minimum Order Information Required

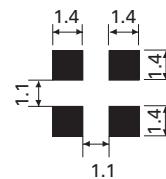
- Frequency + Model Number + Operating Temperature Code (if applicable) + Frequency Stability

Outline in mm

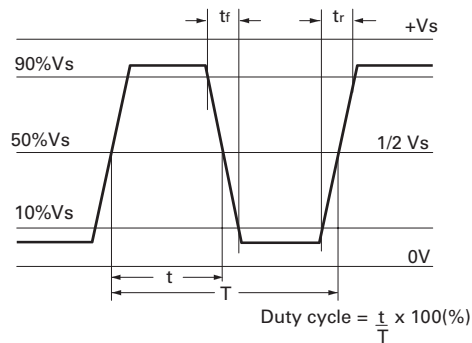


- Pad Connections
1. Enable/Disable
 2. GND
 3. Output
 4. +Vs

Solder pad layout



Output Waveform



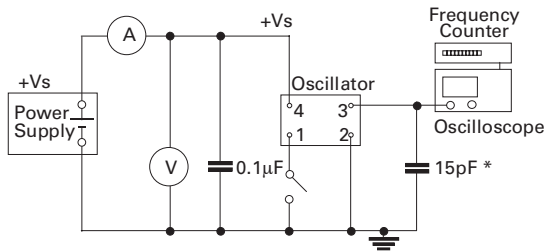
Electrical Specification - maximum limiting values when measured in test circuit

Frequency Range	Frequency Stabilities	Supply Voltage	Supply Current	Rise Time (tr)	Fall Time (tf)	Duty Cycle	Model Number
1.8 to 50.0MHz	±25ppm, ±50ppm, ±100ppm	3.3V ±0.3V	20mA	7ns	7ns	40/60%	CFPS-9 CFPS-9I
Ordering Example				24.0MHz	CFPS-9 I	C	
Frequency _____							
Model No. _____							
Operating Temperature Code: I = -40 to 85°C, Not applicable for -10 to 70°C _____							
Frequency Stability: A = ±25ppm, B = ±50ppm, C = ±100ppm _____							

Please note that the rise and fall times listed are the maximum values we specify to cover various frequency breaks. In practise the actual values are generally lower depending upon the spot frequency chosen. For typical values please contact our sales office.

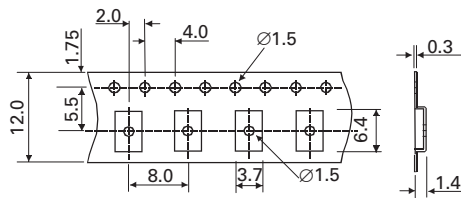
SURFACE MOUNT
SPX08

Test Circuit



* Inclusive of jigging & equipment capacitance

Outline in mm - Tape



Outline in mm - Reel

