

CFPP-620

ISSUE 2; 15 OCTOBER 2004

Delivery Options

- Please contact our sales office for details

Description

- The CFPP-620 is a 3.3V surface mount oscillator with complimentary LVPECL outputs

Package Outline

- 7.0 x 5.0 x 1.8mm SMD (surface mount device)

Output Compatibility

- Differential LVPECL
- Output Load 50Ω terminated to Vs - 2.0V
- Output Voltage VoH (Vs - 1.025)
- Output Voltage VoL (Vs - 1.62)

Standard Frequency Stability

- Over operating temperature range ±25ppm

Operating Temperature Range

- -40 to 85°C

Storage Temperature Range

- -55 to 125°C

Tri-state Operation (CMOS)

- Logic '1' to pad 1 enables oscillator output
- Logic '0' to pad 1 disables oscillator output; when disabled the oscillator output goes to the high impedance state
- No connection to pad 1 enables the oscillator output

Period Jitter

- 10ps rms (typical)

Ageing

- ±5ppm max in 1st year @ 25°C, Vs = 3.3V

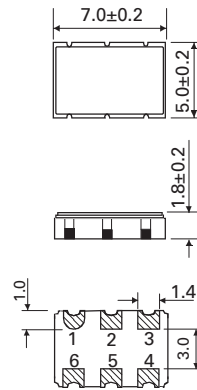
Marking

- Frequency + Model Number

Minimum Order Information Required

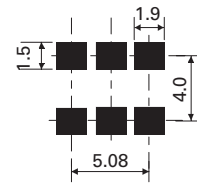
- Frequency + Model Number

Outline in mm

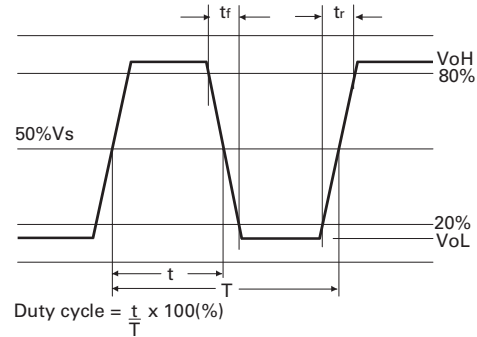


- Pad Connections
1. Enable/Disable (CMOS)
 2. Do Not Connect
 3. GND
 4. LVPECL +
 5. LVPECL -
 6. +Vs

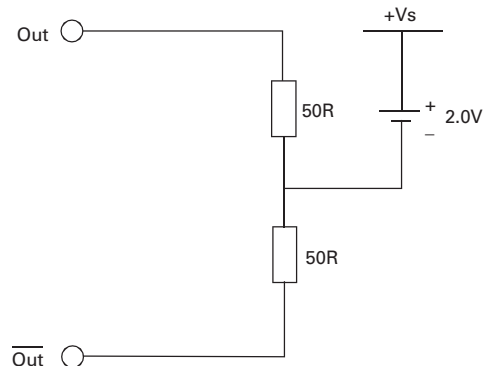
Solder pad layout



Output Waveform



LVPECL Levels Test Circuit



PROGRAMMABLE
OSCILLATORS

